

1/30/04

## ADDENDUM to Installing InoculateIT

### OVERVIEW:

InoculateIT is an excellent program, and (with a configured installation) will give strong protection against all manner of computer viruses. However, it can be improved by additional configurations above those included in the automated installation.

For whatever reason, including these options in the automated installation causes problems. Therefore these settings must be configured Manually, after the program is installed.

These changes are all made to the **File Options** section of 3 scanning options:

#### Realtime, Local Scanner, and Scheduled Scan.

**Delete Trojans** as the cure. (Most files now are just Viruses, and don't "piggyback" on other files. Deleting them is the fastest solution.) Gets them OFF the machine, so they won't show up again in other scans and cause unneeded concern.

**Move Files**, don't just Rename them. This gets them OUT of the directory where they were, and places them in a safe Quarantine folder in the InoculateIT program files folder:

"C:\Program Files\CA\InoculateIT\Move"

Note that with the DELETE option, most viruses are just going to be DELETED anyway.

Lastly:

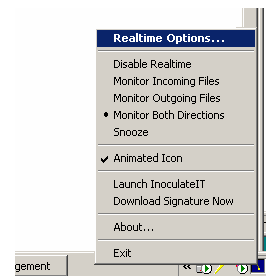
**System Cure**. This option is the only way Inoculate can automatically and completely remove a virus if it has ALREADY infected the system. Sometimes a virus will beat the 4 hour automatic signature update window, and infect a machine! (We saw it happen with the Bugbear virus; very fast moving.) So checking this option gives the program permission to make exceptional system changes to eliminate all problems it may find, including those it may not know about before they happen. (We are a little nervous about this option, but so far there have been no reported problems- Over 200 machines, over a 6 month period, have had this checked with no difficulty.)

### TO MAKE THESE CHANGES (3 places to do it...)

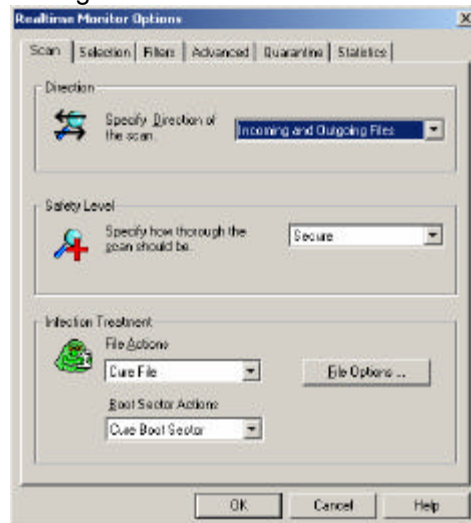
Start with **Realtime Monitor**. (This catches almost EVERY virus.)

Right-click on the "Bouncy Ball" InoculateIT RealTime Monitor in the System Tray. (Bottom right.)

A menu will appear, choose the top item: Realtime Options.



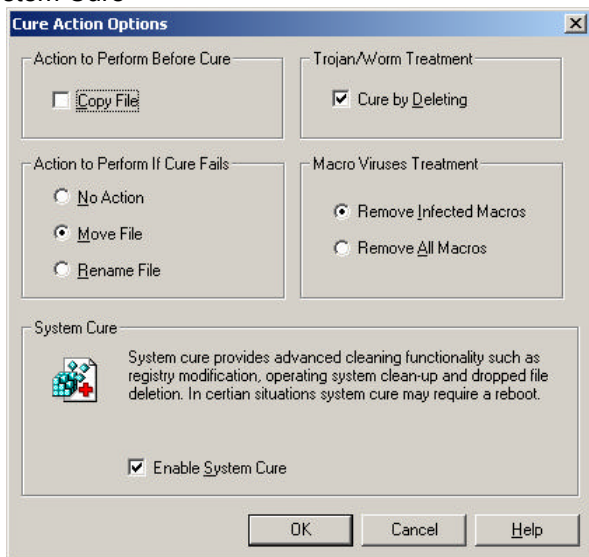
On the first screen, press the button for "File Options" in the lower right.



## Set the options as shown below.

There are 3 Changes:

- 1) Check the box to "Cure by Deleting".
- 2) Action to Perform- Change from Rename to "Move File"
- 3) Bottom Section- System Cure- Check "Enable System Cure"



Say OK, then OK again to exit these dialogs.

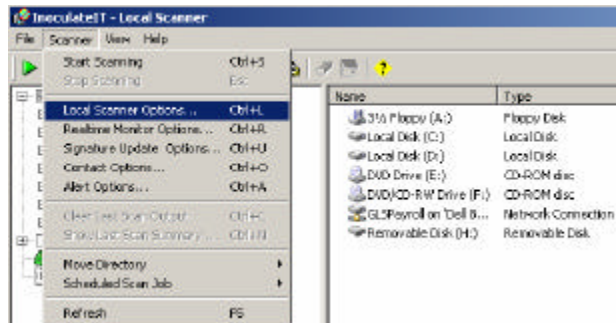
Now we must repeat this for the **Local Scanner** and **Scheduled Scans**.

Right-Click again on the InoculateIT Realtime monitor icon in the lower right.

Choose "Launch Inoculate IT". (This runs the main InoculateIT program.)

Go to the Scanner menu. Choose "Local Scanner Options" (or CTRL-L)

MAKE THE SAME CHANGES as shown above.



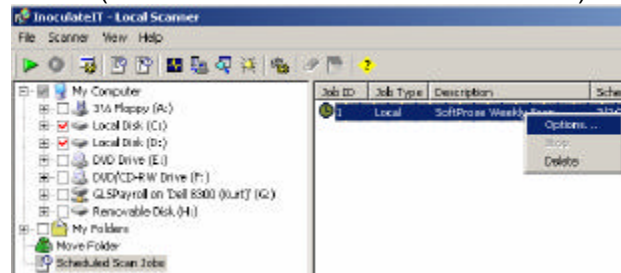
Ignore the Settings Menu "Realtime Monitor Options"; we have done this already.

Go to the menu on the left, and click on Scheduled Scans.

Are there any Scheduled Scans shown on the Right?

If so, right click on the Scan on the right window, and choose "Options" from the menu.

Go to the Second tab, "Scan". Click on the File Options button, and make the three changes as described above. (REPEAT if more than one is scheduled.)



Want to set a Scheduled Scan? Below repeats the information from the Installation Guide:

### SETTING A SCHEDULED SCAN TASK

**NOTE: Scheduled scans are an EXTRA level of protection, and are not essential.**

The "Realtime Monitor" does an excellent job of protecting the machine from viruses.)

Run the InoculateIT application.

From the Scanner menu, select "Scheduled Scan Job", then "Create..." from the Submenu. Give this a descriptive name. "Weekly Scan", for example?

Scan Tab- Use the default settings.

Selection Tab- Use the default settings.

Schedule Tab- The default is to scan once every 7 days. We suggest Friday at Noon. SERVER COMPUTERS should scan at least once a day, normally before the latest backup. Note that the Realtime monitor, which scans all the time, should normally catch a virus, worm, or Trojan Horse before it can do damage, but the Scan process is an extra layer of protection.

CPU Usage Level- If scanning during the day, choose LOW, otherwise set at Normal.

Directories Tab- All local hard drives are selected as a default; this should be fine.

Exclude Tab- If you specifically DON'T want an area of your computer checked (Why Not?), this tab can exclude an area from any scan.

Press OK to save your Scheduled Scan. (Subsequent changes to this scan setting will say "Modify", not "OK".)